



YORK COUNTY HISTORY CENTER
SCHOOL TEACHER GUIDE



YORK COUNTY
HISTORY
— CENTER —

717-848-1587

www.yorkhistorycenter.org

Welcome to the York County History Center!



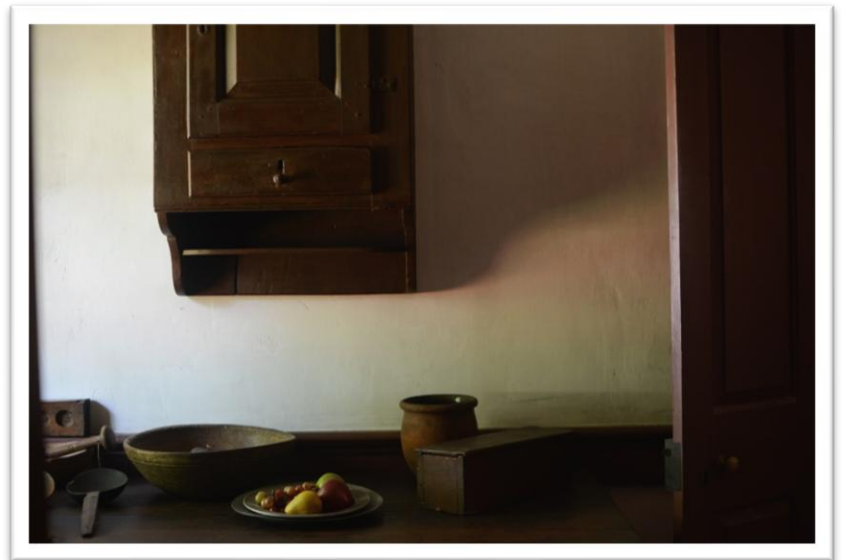
The York County History Center invites you and your students to come explore the history, people, and culture of our county, nation, and state. Whether your school group is enjoying a guided tour of an almost three-century-old building, seeing a historical artifact up close, or interacting with an exhibit, they will be able to experience history in a unique and exciting way.

Please use this guide to learn more about what the History Center can offer you and your students. You will also find useful information about scheduling a field trip and how best to prepare for a meaningful learning experience at the History Center.

If you have any questions, you can contact the education department by phone at **717-848-1587, ext. 302** or by email at **schools@yorkhistorycenter.org**.

Table of Contents

About Us	3
Our Museums & Programs at-a-Glance	3-6
PA Academic Standards & the History Center	7-9
Reservations & Rates	10-12
Know Before You Go	13-15
Information for Chaperones	16
Field Trip Survey	17-18



Teachers are always welcome to visit any History Center museum for *free* to plan a field trip!

Our educators are happy to meet with you to discuss your field trip. To be sure that an educator is available, we ask that you make an appointment in advance.

About Us

The York County History Center is a non-profit organization that inspires lifelong learning about the American story through its collections, historic sites, museums, and library. As such the center is a resource for teachers and schools to help students grow as they learn about their history. In the following pages we offer information about the exciting museums and programs that your students can explore at the History Center.

Top 4 Reasons to Have Your Next Field Trip at the York County History Center

1. Field trips at the History Center are interactive and encourage your students to ask questions. Experiences like these help students become more involved in the learning process and, as a result, they are more likely to be active, lifelong learners.
2. Our field trips are interdisciplinary and fit the academic standards set forth by the Pennsylvania Department of Education. Please see pages 7, 8, and 9 to discover what specific subjects and areas our tours can help your students explore.
3. Field trips at the History Center are **fun!** Our guided tours and interactives are site specific but can help enrich learning in the classroom before and after a field trip.
4. A field trip at the History Center introduces students to a world of learning outside of the classroom that they can visit throughout their lives. The History Center and other museums can help them continue learning during the summer and even after graduation.



Our Museums and Program at-a-Glance

Field Trips

York County History Center

Suggested Tour Length: 60 minutes

A visit to this museum takes students on an immersive journey through York County's rich history. Begin your exploration at the History Makers Tower, where a state-of-the-art touchscreen display invites you to delve into the lives of History Makers from all walks of life. Uncover the narrative threads woven within the sections titled Building, Growing, Energizing, Making, and Can-Do. Each section features digital towers, touchscreens, and interactives that will let you explore topics that pique your curiosity. Discover York County's pivotal role in early expansion across Pennsylvania and its long-overlooked contributions to the Underground Railroad. Learn about the innovations in

farming and industry that cemented the county's status as a place of progress and resilience. Experience a building transformed into a vibrant space where history comes to life.

Agricultural & Industrial Museum

Suggested Tour Length: 60 minutes

Tour and Interactive Exploration: 75-90 minutes

A field trip to the Agricultural & Industrial Museum helps students learn about York County's many contributions to agricultural and industrial progress. At the museum, your students can see agricultural artifacts that York County residents and workers either used or produced over three centuries. Working exhibits include a three-story gristmill. The exhibit *Air, Land, & Water: Transporting People & Products* also includes York manufactured automobiles, a diesel engine, and a York trolley car.



Colonial Complex

Suggested Tour Length: 60-75 minutes

Tour and Interactive Colonial Activities: 90 minutes

Bring your students to one of York's most interesting attractions, the Colonial Complex. During a tour of several historic buildings and a reproduction of York's first courthouse, students can learn about the history of York, the Revolutionary War, and colonial life. The tour includes the Golden Plough Tavern, a Germanic half-timbered building built in 1741, which is the City of York's oldest structure. Students will also visit the General Gates House (c. 1755) where General Horatio Gates

stayed after being appointed the president of the Board of War. Tours often include a visit to the Barnett Bobb Log House (1812) for hands-on activities. While visiting these three historic buildings, students will see and learn about period furnishings, textiles, tools, and utensils. A tour of the Colonial Complex would not be complete without visiting the reproduction of the first courthouse in York. Here students will learn more about York's history as a headquarters for the Continental Congress from September of 1777 to June 1778 and as the place where congress adopted the Articles of Confederation. They can also try their hand at ringing the courthouse's bell.



Fire Museum

Suggested Tour Length: 45 minutes

A visit to this museum, located in the 1903 Royal Fire House, allows students to see how York firefighters worked, lived, and played. The museum holds more than 225 years of firefighting equipment that is representative of the 72 fire companies of York County. Some of the objects that students can see and learn about include six twentieth-century fire trucks, nineteenth-century hand-pumped equipment, original stalls for the fire horses, alarm boxes, parade uniforms, and photographs. During their tour, students can work on their firefighting skills by forming a bucket brigade and trying out a hand pumper (weather permitting).

Virtual Tours

We recognize that some schools are not able to participate in on-site field trips. The History Center now offers educators the opportunity to have your class visit us virtually. Our virtual field trips include a live, guided virtual tour of our historic site hosted over video conferencing platform (Zoom, Google Meet, etc).

The Colonial Experience at the Golden Plough Tavern and the Horatio Gates

House: Looks at the creation of Pennsylvania, the establishment of York and what life was like in a middle-class Germanic home/tavern and an upper-class English home. **Recommended:** grades 3-12. **Time:** 45-60 minutes.

Continental Congress at the Colonial Courthouse: Explores the importance of York's courthouse and examines Continental Congress' significant accomplishments (Articles of Confederation, 1st National Day of Thanksgiving, French Alliance, Continental Currency) during their nine-month stay. **Recommended:** grades 5-12. **Time:** 30-45 minutes.

Gristmills and Grain production: Tours the three-story gristmill at the Agricultural and Industrial Museum and explores the ins and outs of flour production. Gristmills were part of an important industry for Pennsylvania and York County. **Recommended:** grades 1-5. **Time:** 30-45 minutes.

Traveling Trunks School Program

If you are unable to visit the History Center this year or are looking for a way to enrich your classroom experience before or after a field trip to one of our sites, the Traveling Trunks School Program could be a great resource for you and your class. Please read the descriptions below to learn more about the materials available for use in classrooms or off site. An inventory for each available traveling trunk is included online at yorkhistorycenter.org under the “Field Trips” section of the “Tours” tab at the top of our webpage.

This program is most appropriate for grades 2-6.

For more information about rates and reserving a traveling trunk please visit the “Reservations & Rates” section of this guide.

Colonial America and the Revolution

Experience the life of an eighteenth-century man or woman! A hands-on experience is provided for your classroom as students examine reproduction Revolutionary-era clothing, tools, and games. Trunk inventory available upon request.



Soldiers and Civilians of the Civil War

Complete Union and Confederate uniforms and equipment give your students an accurate feel of what a Civil War soldier's life was like. Ladies' clothes show just how complicated and elaborate women's outfits could be! Also included are reproductions of Civil War era games. Trunk inventory available upon request.

Pennsylvania Academic Standards & the History Center

All of our field trips fit the academic standards set forth by the Pennsylvania Department of Education. Please see the chart below to see which specific standards are addressed at the York County History Center Museum, Agricultural & Industrial Museum, the Colonial Complex, and the Fire Museum. If you have specific questions about tour content, please contact the education department by phone at 717-848-1587, ext. 302 or by email at schools@yorkhistorycenter.org.

York County History Center

History	Civics & Government	Economics	Geography	Science & Technology	Environment & Ecology	Arts
8.1.3.A, B	5.3.1.PK.A	6.4.3G	7.3.3C, D	3.1.4A, B, E	4.1.3A	9.1.12F
8.1.4A, B	5.1.K.A	6.4.6D, E,	7.3.6 C, D	3.2.4B	4.3.2A	9.2.3A,
8.1.5A, B		G	7.4.3A, B	3.2.7A	4.3.3A	B, C, D,
8.1.6A, B		6.4.9B, G	7.4.6A	3.4.4A	4.4.K. A, B,	E, F, G,
8.1.7A, B		6.4.12G		3.5.4B, D	D	H, J, K
8.1.8A, B		6.5.6F		3.5.7B	4.4.1A, B	9.2.5A,
8.1.9A, B		6.5.12F		3.5.10B	4.4.2A, B	B, C, D,
8.1.9A, B				3.5.12B	4.4.3A, B, D	E, F, G,
8.1.U. A, B				3.6.4A, B, C	4.5.PK.D	H, J, K
8.1.W. A, B				3.6.7C	4.5.K.A	9.2.8A,
8.1.12. A, B				3.7.4A	4.5.1A	B, C, D,
8.2.3A, B, C, D				3.8.4A, B	4.5.2A	E, F, G,
8.2.4A, B, C, D				3.8.7A	4.5.3A	H, J, K
8.2.5A, B, C, D						9.2.12A,
8.2.6A, B, C, D						B, C, D,
8.2.7A, B, C, D						E, F, G,
8.2.8A, B, C, D						H, J, K
8.2.9A, C, D						9.3.8A
8.2.U. A, C, D						9.3.12A,
8.2.12. A, C, D						F
8.3.3A, B, C, D						9.4.5D
8.3.4A, B, C, D						
8.3.5A, B, C, D						
8.3.6A, B, C, D						
8.3.7A, B, C, D						
8.3.8A, B, C, D						

Agricultural & Industrial Museum

History	Civics & Government	Economics	Geography	Science & Technology	Environment & Ecology	Arts
8.1.3.A, B 8.1.4A, B 8.1.5A, B 8.1.6A, B 8.1.7A, B 8.1.8A, B 8.1.9A, B 8.1.U. A, B 8.1.W. A, B 8.1.12. A, B 8.2.3A, B, C, D 8.2.4A, B, C, D 8.2.5A, B, C, D 8.2.6A, B, C, D 8.2.7A, B, C, D 8.2.9A, C, D 8.2.8A, B, C, D 8.2.U. A, C, D 8.2.12. A, C, D 8.3.3A, B, C, D 8.3.4A, B, C, D 8.3.5A, B, C, D 8.3.6A, B, C, D 8.3.7A, B, C, D 8.3.8A, B, C, D	5.3.1.PK.A 5.1.K.A 5.1.3.B	6.1.3C 6.1.6B, C 6.2.3A, E, K 6.2.6A, B 6.3.3A, B, C 6.4.3A, B, D, E, G 6.4.6A, D, E, G 6.4.9B, G 6.4.12G 6.5.3B 6.5.6F 6.5.12F	7.1.3A 7.3.3A, C, D 7.3.6A, C, D 7.3.9A 7.3.12A 7.4.3A, B 7.4.6A	3.1.4A, B, E 3.1.7A, B, E 3.1.10A 3.2.4B 3.2.7A 3.4.4A, B, C 3.4.10B, C 3.5.4B, D 3.5.7B 3.5.10B 3.5.12B 3.6.4A, B, C 3.6.7B, C 3.6.10C 3.7.4A 3.7.7A 3.8.4A, B, C 3.8.7A, B, C 3.8.10A 3.8.12A	4.1.3C 4.3.1A 4.3.2A 4.3.3A, B 4.4.PK.D 4.4.K. A, B, D 4.4.1A, B 4.4.2A, B 4.4.3A, B, D 4.5.PK.A, D 4.5.K.A 4.5.1A 4.5.2A 4.5.3A	9.1.3H, J 9.1.12F, J 9.2.3A, B, C, D, E, F, G, H, J, K 9.2.5A, B, C, D, E, F, G, H, J, K 9.2.8A, B, C, D, E, F, G, H, J, K 9.2.12A, B, C, D, E, F, G, H, J, K

Colonial Complex

History	Civics & Government	Economics	Geography	Science & Technology	Environment & Ecology	Arts
8.1.3B 8.1.4A, B 8.1.5A, B 8.1.6A, B 8.1.7A, B 8.1.8A, B 8.1.9A, B 8.1.9A, B 8.1.U. A, B 8.1.W. A, B 8.1.12. A, B 8.2.3A, B, C, D 8.2.4A, B, C, D 8.2.5A, B, C, D 8.2.6A, B, C, D	5.3.1.PK.A 5.1.K.A 5.1.3B, C, D, E, H 5.1.6E, H 5.1.9E, H 5.1.12E, H 5.4.3D	6.1.3A, B, C 6.1.6B, C 6.2.3A, C, E, G, J, A 6.2.6A, B, E, F 6.2.9L 6.3.3A, B, C 6.4.3B, F, G 6.4.6D, E, G 6.4.9B, G	7.3.3A, B, C, D 7.3.6A, B, C, D 7.3.9A 7.3.12A, B 7.4.3A, B 7.4.6A	3.1.4A, B, E 3.1.7A, B, E 3.2.4B 3.2.7A 3.4.4A 3.5.4B, D 3.5.7B 3.5.10B 3.5.12B 3.6.4A, C 3.6.7C 3.7.4A 3.7.7A 3.8.4A, B, C 3.8.7A, B	4.3.1A 4.3.2A 4.3.3A, B 4.4.PK.B 4.4.K. A, B, D 4.4.1A, B 4.4.2A 4.4.3A, B, D 4.5.PK.A, D 4.5.K.A 4.5.1A 4.5.2A 4.5.3A	9.1.12F, J 9.2.3A, B, C, D, E, F, G, H, J, K 9.2.5A, B, C, D, E, F, G, H, J, K 9.2.8A, B, C, D, E, F, G, H, J, K

8.2.7A, B, C, D 8.2.8A, B, C, D 8.2.9A, B, C, D 8.2.U. A, B, C, D 8.2.12. A, C, D 8.3.3A, B, C, D 8.3.4A, B, C, D 8.3.5A, B, C, D 8.3.6A, B, C, D 8.3.7A, B, C, D 8.3.8A, B, C, D 8.3.9B 8.3.UB 8.3.12B 8.3.C C 8.3.C D		6.4.12G 6.5.3B, C 6.5.6F		3.8.10A 3.8.12A		9.2.12A, B, C, D, E, F, G, H, J, K 9.3.8A 9.3.12A, F
--	--	--------------------------------	--	--------------------	--	--

Fire Museum

History	Civics & Government	Economics	Geography	Science & Technology	Environment & Ecology	Arts
8.1.3B 8.1.4B 8.1.5A, B 8.1.6A, B 8.1.7A, B 8.1.8A, B 8.1.9A, B 8.2.3C 8.2.4C 8.2.5C 8.2.6C 8.2.7C 8.2.8C 8.2.9C, D	5.3.1.PK.A 5.1.K.A			3.1.4A, B, E 3.1.7A, B, E 3.1.10A 3.2.4B 3.2.7A 3.4.4A, B 3.4.10B 3.4.12B 3.6.4C 3.6.7C 3.7.4A 3.8.4A, B 3.8.7A		

Reservations & Rates

Reserving a Tour Date & Time

The History Center is excited that you are booking a tour with us and we look forward to meeting you. Please see the directions below on how and when to schedule your field trip. We are able to accommodate field trips at the Agricultural & Industrial Museum, the Colonial Complex, the Historical Society Museum, and the Fire Museum year-round.

How do I make a reservation for a group smaller than 60 (including chaperones and teachers) to visit one or two museums?

You can check available days and make a request to reserve a date for your group using our online calendar. Simply visit the “Field Trips” section under “Tours” on our website’s home page. Then click on “Schedule a Field Trip Now” to view available days and to submit your request. You can also schedule a tour by contacting the Education Department at **717-848-1587, ext. 302** or **schools@yorkhistorycenter.org**.

When scheduling your tour, please keep in mind that tours can be scheduled starting at **9:30 a.m.**, and must conclude by **4:00 p.m.** Guided tours must also be **scheduled a minimum of three weeks in advance**. The museums of the York County History Center are popular destinations for field trips. We are especially busy from March through early June, so be sure to schedule your visit as early as possible!



What if my group is larger than 60 people or if we want to see more than two museums?

In order to make sure that your group has a wonderful experience at the History Center we limit each day of your field trip to 60 people per site (including teachers and chaperones). We also suggest that groups visit only one or two of our sites per field trip day to make sure that your students have enough time to explore each museum. This means that we can accommodate groups of up to 120 people split between two sites in one day. We welcome larger groups to schedule multiple days for their field trip.

For example, a group of 200 could visit over the course of two days. See the sample schedule on page 14.

To schedule your reservation for groups that require more than one day, please start with the directions above for scheduling a tour for groups smaller than 60. Then either let the Education Department know how many days you need to schedule or submit one online form for each day that you need to reserve.

Group Tour Admission Rates



- ◆ \$6 per student for one site or walking tour
- ◆ \$7 per student for two or more sites or walking tours
- ◆ A FREE adult admission for every 5 students (additional chaperones pay group rate)
- ◆ FREE for Educational Members (see “Museum Memberships for Schools” below)

Museum Memberships for Schools

School districts and educational organizations can become Educational Members by paying a yearly fee that covers the cost of tours and programs, including Traveling Trunks and outreach presentations, for the entire school year (September – June). The Museum Membership fees are listed below and are based on the population of your district or school. To become an Educational Member, please fill out the form on the next page or visit our “Field Trips” section under “Tours” at our website www.yorkhistorycenter.org.

- ◆ \$650 for 1 to 500 students
- ◆ \$1,200 for 501 to 1,000 students
- ◆ \$1,700 for 1,001 to 2,000 students
- ◆ \$2,300 for 2,001 to 4,000 students
- ◆ \$2,800 for 4,001 to 6,000 students
- ◆ \$3,200 for 6,001 to 8,000 students



Traveling Trunk Reservations & Rates

To reserve a Traveling Trunk for your class please call the Education Department at 717-848-1587, ext. 302 or email us at schools@yorkhistorycenter.org. In order to make sure we have a traveling trunk available, please contact the Education Department at least three weeks in advance. Due to demand, each organization may only sign out one trunk at a time.

Reserved trunks can be picked up at the Agricultural & Industrial Museum between the hours of 10:00 a.m. and 4:00 p.m., Tuesday – Saturday. Each Traveling Trunk rental is for 10 school days.

- ◆ \$25 per trunk for non-member schools, educational institutions, and children’s groups
- ◆ \$75 per trunk for a museum educator to accompany the trunk
- ◆ Free for Educational Members (see “Museum Memberships for Schools” above)





YORK COUNTY
HISTORY
 = CENTER =

121 N. Pershing Avenue, York, PA 17401
 (717) 848-1587
www.yorkhistorycenter.org

Education Membership Application

Valid September – June

School Year: _____

School Name and Mailing Address:

Name and Title of Contact Person:

Phone Number and E-Mail Address:

Total Student Population:

Amount of Payment (see below):

Education Member Rates:

<u>Total Student Population</u>	<u>2026 - 27 School Year</u>
1 - 500	\$ 650.00
501 - 1,000	\$1,200.00
1,001 - 2,000	\$1,700.00
2,001 - 4,000	\$2,300.00
4,001 - 6,000	\$2,800.00
6,001 - 8,000	\$3,200.00

Please return the completed application with payment to the above address or electronically to vlong@yorkhistorycenter.org. Questions may be directed to the York County History Center’s Education Department at (717) 848-1587 x301 or via e-mail schools@yorkhistorycenter.org.

Thank you for allowing us to engage your students in our local, state and national story!

The York County History Center is a 501(c)(3) nonprofit corporation under Internal Revenue Service regulations. The official registration and financial information of York County History Center can be obtained from the Pennsylvania Department of State by calling toll free, within Pennsylvania, 1 (800) 732-0999. Registration does not imply endorsement.

Know Before You Go

When to Schedule a Trip

Guided tours must be scheduled a minimum of three weeks in advance because the museums of the York County History Center are popular destinations for field trips. To arrange your visit, reserve online by following the easy instructions on page 10, or contact the Education Department at 717-848-1587, ext. 302.

PLEASE NOTE: The end of April through beginning of June is our busiest time. Dates in May are often filled by early February. Reserve your date early or consider a visit in the fall.

How Much Time Should You Allow

On the next page, you will find a possible schedule which includes a 30-minute lunch break and travel time between two of our sites. You'll want to allow sufficient time in your itinerary for traffic delays, checking in, getting into your small groups, restroom breaks, shopping, and travel back to school.

Eating Lunch at the History Center

When you schedule your tour, please let the Education Department know if you are interested in eating your lunches at the History Center so that we can reserve a space at the History Center Museum or the cafeteria at the Agricultural & Industrial Museum for your group. Lunches should be brown-bagged and placed together in a large box with your school's name on it. Our staff will hold your lunches until your group is prepared to eat. We ask that all visitors place their garbage in the trash bins provided.

Photography

Visitors may take pictures in the museums with the flash turned off.

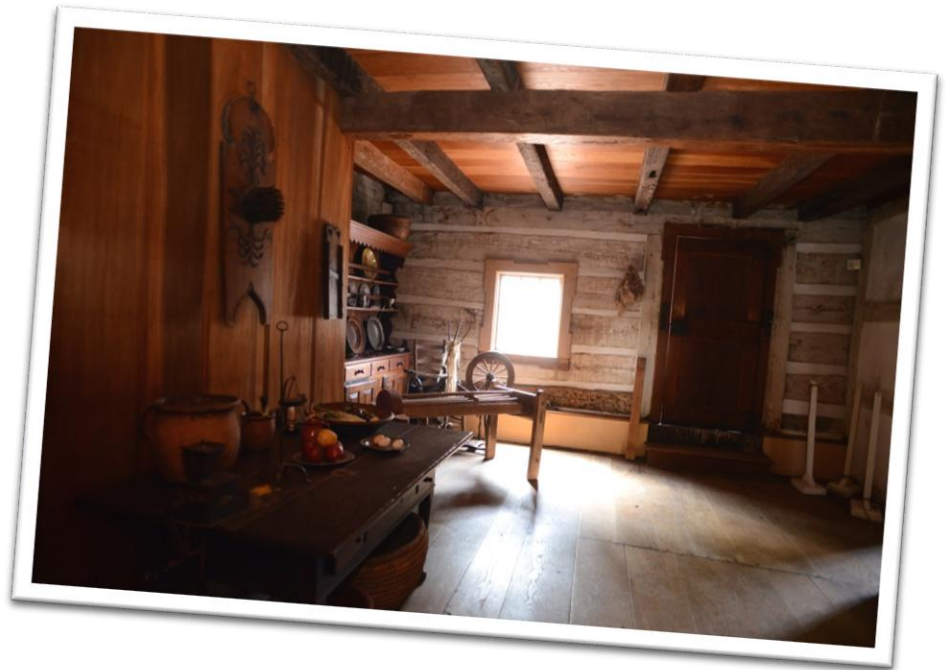
Videography

Visitors may not video a tour without prior permission.

Chaperones

We suggest 1 accompanying adult (teacher or chaperone) for every 10 students. Younger groups might require more adults.

We offer free admission to one adult (teacher or chaperone) with every ten student admissions.



Payment

Payment for all group tours may be made with cash, check, or credit card (MasterCard, Visa, and Discover). Payment may be made at the front desk of the museum you're visiting or in advance.

Have an Exact Count of Students in your Group

Please have the correct count of students in your group when you arrive at the History Center. It will expedite your check in so that the fun can start right away! On page 15, we have provided a form to help make this process easier and to help chaperones know their schedule for the day.



Assigning Students to Groups

In order to provide groups with the best tour experience, we divide into tour groups of up to 20 people. This number includes both students and accompanying adults.

If you are visiting more than one site, your students might be divided to tour different sites at the same time. We recommend contacting the History Center a week before your visit to discuss how your groups will be divided. Arriving with your students pre-assigned to groups will allow your students to

get started on their tour when they arrive.

The grid below shows a sample timeline for 100 students divided between two sites. Six to eight groups of about 10-15 students each will move through two History Center museums: three to four groups at the Colonial Complex and three to four groups at the York County History Center. All students will then gather at the York County History Center for lunch, then switch locations following lunch.

	MR. SMITH'S CLASSES (50 students)	MRS. JONES' CLASSES (50 students)
10:30 - 11:30	York County History Center	Colonial Complex
11:45 - 12:15	Lunch	Lunch
12:30 - 1:30	Colonial Complex	York County History Center
1:45	Depart Museum	Depart Museum

Additional arrangements may be made for your students based on class sizes and arrival times. Please contact the History Center's Education Department at 717-848-1587, ext. 302 or by email at schools@yorkhistorycenter.org for more information or to make arrangements.

School Tour Ticket Count

Please print and have this form completed when you arrive at the History Center.
Make a copy for each section leader.

Date _____ Arrive at _____ Depart at _____

Museum(s) Visiting _____

Tour Leader _____ Grade(s) _____

Section 1 Number of Students _____ Number of Chaperones _____ Section Total _____

Section Leader _____ Lunch Time _____

Section 2 Number of Students _____ Number of Chaperones _____ Section Total _____

Section Leader _____ Lunch Time _____

Section 3 Number of Students _____ Number of Chaperones _____ Section Total _____

Section Leader _____ Lunch Time _____

Section 4 Number of Students _____ Number of Chaperones _____ Section Total _____

Section Leader _____ Lunch Time _____

Total Students _____

Total Chaperones _____

Group Total _____

Information for Chaperones

(If possible, chaperones should receive a copy of these instructions prior to arrival.)

We kindly ask for your assistance and cooperation in making this field trip a worthwhile educational experience for your students. Thank you for your help. We look forward to meeting you.

Please Keep your Group Together

You should always keep the students in your section within your sight. Do not let students get ahead of your guide, wander away from your group, or lag behind.

Lunch

If your school is eating lunch at the Agricultural & Industrial Museum, please bring your lunches into the museum before you start your tour. Our staff will hold them until your group is ready to eat. Take your section to the designated dining area on the second floor at the time specified by your group leader.

Ask Questions!

Please feel free to ask any of our staff members or tour guides a question!

Departure

Please keep track of your group after your tour has concluded! Your group leader will provide you with directions and information as to where to meet and when you are leaving.

Student Requests

- ◆ Please be considerate of other guests visiting the History Center. No loud talking, running, or jumping.
- ◆ Stay within sight of your guide. Please do not wander ahead of or behind your section.
- ◆ No food or drinks are allowed in the galleries (including gum).
- ◆ You may take pictures in our galleries, but your camera's flash must be turned off.
- ◆ Please do not touch any of the objects. There are items you can touch and your guide will tell you what can be handled.

Note

For the safety of all, our museums (both inside and outside) are under video surveillance.



SCHOOL FIELD TRIP SURVEY

Please help us to serve schools better by completing this survey.

Name of School:

Date of Visit:

Teacher Name:

I. Scheduling Put a check next to all that apply. (If you did not schedule the trip, skip to the next section)

- Scheduled using the online registration form.
- Received a copy of the History Center’s Field Trip Guide.
- Visited the History Center on a prior field trip.
- Met or spoke with staff from the History Center to discuss and arrange tour options.
- Used the Colonial Complex virtual tour to help make the decision to visit the History Center.

If you scheduled online, what statement best describes your experience?

- Great! Saved time, worked well.
- Good idea but would be better if _____.
- I prefer speaking with a person.

II. Please rate the following aspects of your visit (1 being lowest and 5 being the highest).

Pre-visit

Usefulness of the Colonial Complex virtual tour in preparing students for a visit	1	2	3	4	5	N/A
Understanding of the schedule and logistics for the visit	1	2	3	4	5	

Exhibit and tour content

Relevance of content to classroom learning	1	2	3	4	5
Met your educational expectations	1	2	3	4	5

Guides

Accuracy of content delivered	1	2	3	4	5
Ability to relate content to students/grade appropriate	1	2	3	4	5

(continued on the back)

Experience

Ease of arrival and grouping logistics	1	2	3	4	5
Amount of time for touring the museum(s)	1	2	3	4	5
Likelihood you would return based on this experience	1	2	3	4	5

III. Topic/Exhibit Feedback

What I enjoyed most/found most useful:

What I liked least/found less useful:

What I wanted to learn more about:

Comments:

Please return to:

York County History Center
ATTN: Education Department
121 N. Pershing Avenue
York, PA 17401

Or email to: schools@yorkhistorycenter.org

Thank you for visiting!